

PROJECT STATUS REPORT

JANUARY 2014 - JUNE 2014

SECTION 1: PROJECT SUMMARY

PROJECT NAME: Creation of a Human financing model for higher education in Haiti

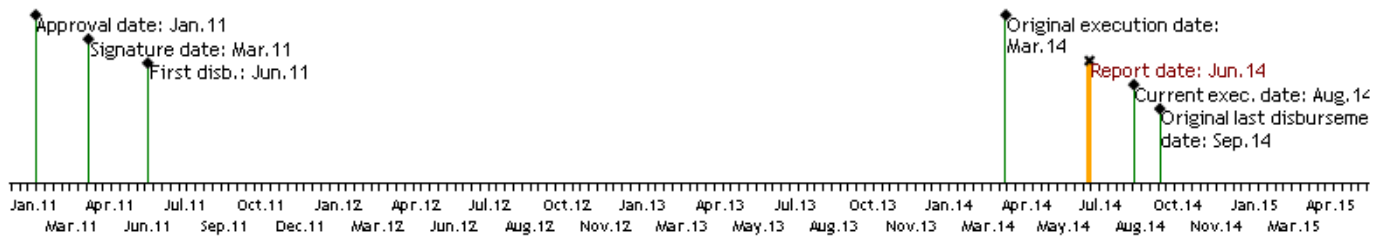
Project Number: HA-M1030 - Operation Number: ATN/ME-12633-HA

Result: The purpose of the project is to create a replicable and scalable model based in a sustainable financial mechanism. that provides access to higher education.

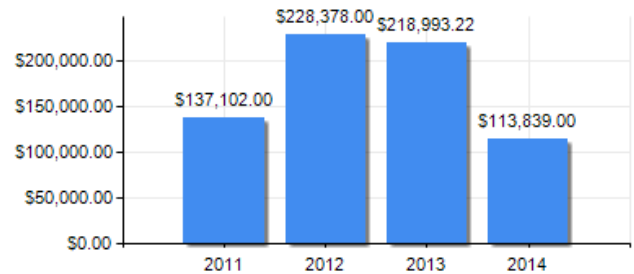
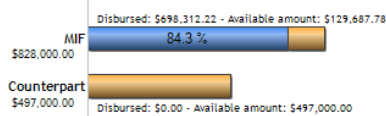
Country Administrator HAITI	Beneficiary Country HAITI	Group WSD - Worker Skills Development	Subgroup YTRG - Youth Training
---------------------------------------	-------------------------------------	---	--

Executing Agency: HAITIAN EDUCATION AND LEADERSHIP PROGRAM	Design Team Leader: Buenadicha, Cesar M.
	Supervision Team Leader: Denize, Ralph

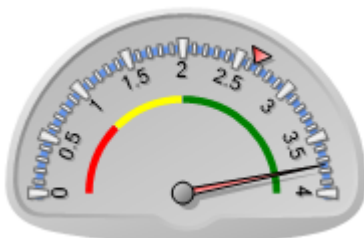
TIMELINE



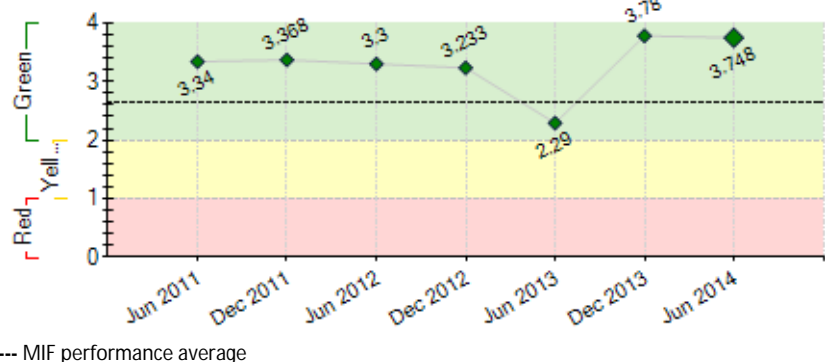
FUNDS



PERFORMANCE SCORE



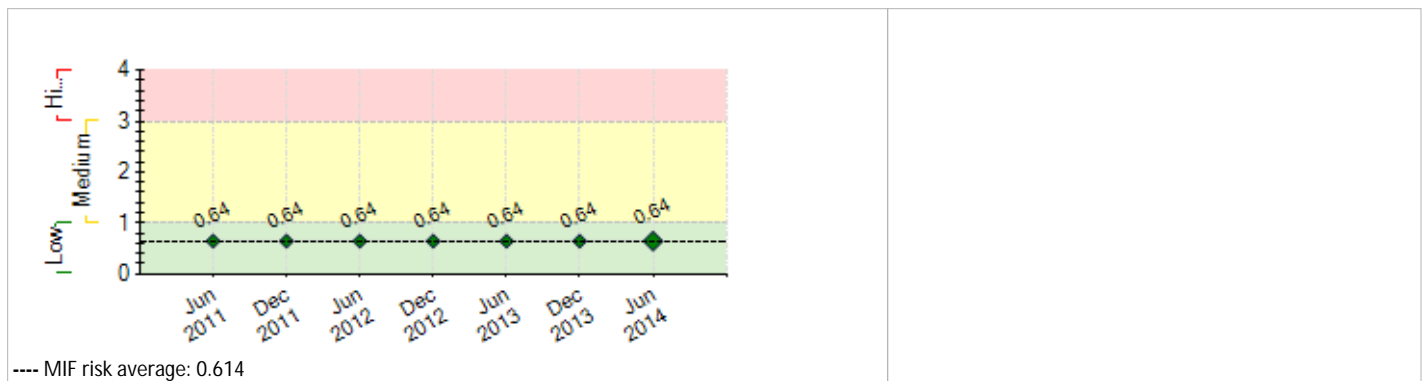
Current score: Satisfactory: 3.748
MIF Average: 2.65



EXTERNAL RISKS

INSTITUTIONAL CAPACITY

	Risk
Financial Management:	Medium
Procurement:	Low
Technical Capacity:	Medium



SECTION 2: PERFORMANCE

Summary of project performance since inception

To date, 132 students have signed the ACM contract committing to contribute 15% of their wages for 9 years following graduation.

Since signing the contract 12.8% students have left the program either for personal reasons or because they failed to meet educational requirements for HELP. This is higher than the goal of 9% and HELP is currently working to improve student retention through improved recruitment and selection processes and through increased awareness and motivation to follow the rules of the institution.

Of the 71 eligible alumni as of June 30, 2014 100% are currently employed and 81% are employed in Haiti or pursuing an advanced degree.

Of the 71 HELP alumni, 100% are part of the alumni network.

Job placement strategy is in place and 39 local companies and organizations, such as CFI, BRANA, Cine Institute, Citi Bank, The Lambi Fund, Barban court and the Digicel Foundation.

Since FY10, HELP has increased its donor support by 142%.

An interim evaluation of this project was completed in August 2014 by Reginald PAUL. The evaluation was positive and confirmed the effectiveness of the ACM and provided some helpful recommendations to improve results.

FOMIN approved HELP's request for a budget revision and extension of the project until the end of 2014. This revision is based on the lessons learned and current priorities for the program and the extension allows HELP to show some collection results given that the first ACM students will be graduating in 2014.

Comments from the Supervision Team Leader

Agree with the Executing Agency comments

The cumulative and semester performance of the project is in line with the expectations. An extension to the end of the year was granted to allow the MIF to fully test the financing mechanism (The first ACM graduates will complete their academic cycle this year). The next six months of project execution will focus exclusively on the reduction of the attrition rate from 12.8% to below 10%; the preparation of a case study; the drafting of sustainability plan.

The latter two to be presented and discussed in the Final Workshop.

Summary of project performance in the last six months

The second impact assessment by FONKOZE report has been submitted and reviewed. The final draft should be received by the end of July. A third assessment will start immediately following the admission of the next class of HELP students in September.

HELP held its first donor event for local donors on June 6th. HELP currently receives 10% of its operating budget from local donors such as Brana, Digicel, Capital Bank, Barban court, E-Power, etc. This event was an opportunity to both thank and further engage our local supporters.

HELP produced a promotional film with IDB funding through Cine Institute. This 10 minute film provides testimonial from students, staff and supporters and will be used to raise awareness and to support fundraising efforts.

Project Coordinator, Amber WALSH, presented the HELP program at a Yale Alumni Association event in New York City on April 22nd and to AGERCA in Port-au-

Prince on May 26th.

As part of the job placement strategy, HELP took a pro-active approach in soliciting internship opportunities for students among its local supporters. HELP is also working with the Kellogg Foundation and ARC to reach out to their partners across the country to find intern and job opportunities.

Comments from the Supervision Team Leader

Agree with the Executing Agency comments
See above.

SECTION 3: INDICATORS AND MILESTONES

Indicators	Baseline	Intermediate 1	Intermediate 2	Intermediate 3	Planned	Achieved	Status
Result: The purpose of the project is to create a replicable and scalable model based in a sustainable financial mechanism. that provides access to higher education.	R.1 At the end of the project: A pioneer sustainable mechanism for financing higher education for low-income students (ACM model) has been created in Haiti that paired to HELPR experience formed a replicable and scalable model and has provided access to higher education to 150 low-income students.	0			1 Mar 2012	0 Aug 2011	
	R.2 The attrition rate of the program is below 10%	0			9 Mar 2014	12.8 Jun 2014	
Component 1: I. Design and implement the Alumni Contribution Model Weight: 50% Classification: High Satisfactory	C1.11 At the end of the project: 1 fully tested financing mechanism is completely operational.	0			1 Mar 2014	0 Jun 2014	Delayed
	C1.12 At the end of the project: 150 students financed under the ACM model.	0	45 Mar 2012	90 Mar 2013	150 Mar 2014	132 Jun 2014	Delayed
Component 2: II. Strengthen the current student services, create an alumni network and develop a job placement system Weight: 15% Classification: High Satisfactory	C2.11 At the end of the project: 95% of the new graduate students become members of the alumni network.	0	70 Mar 2012		95 Mar 2014	100 Jun 2014	On Course
	C2.12 At the end of the project: At least 20 employers join the job placement system of HELPR.	0			20 Mar 2014	39 Jun 2014	On Course
Component 3: III. Reinforce fundraising capabilities Weight: 25% Classification: High Satisfactory	C3.11 At the end of the project: HELPR supporters within USA increase in at least 20%	0	10 Mar 2013		20 Mar 2014	142 Jun 2014	On Course
	C3.12 At the end of the project: At least 2 social investors invest in the financial mechanism.	0			2 Mar 2014	16 Jun 2014	On Course
Component 4: IV. Knowledge management and communication strategy of the initiative Weight: 10% Classification: Satisfactory	C4.11 At the end of the project: A case study of the model is developed and disseminated	0			1 Mar 2014	0 Jan 2012	On Course
	C4.12 At the end of the project: The HELPR financial mechanism has been presented in at least 4 national or international seminars or conferences.	0			4 Mar 2014	7 Jun 2014	Delayed

Milestones	Planned	Due Date	Achieved	Date achieved	Status
M0 Conditions Prior	4	Sep 2011	4	May 2011	Achieved
M1 Job placement system developed for program graduates	1	Mar 2013	1	Dec 2012	Achieved
M2 Attrition rate of the program	9	Mar 2013	22	Mar 2012	Achieved
M3 Cumulative amount of the Capital development funds created in USD	325000	Mar 2013	357489	Jun 2013	Achieved late
M4 [*] Financial mechanism designed and implemented	1	Sep 2013	1	Jun 2013	Achieved
M5 [*] Capital development Funds created	1	Sep 2013	1	Jun 2013	Achieved
M6 Cumulative number of students financed under the HCC model	120	Mar 2014	132	Dec 2012	Achieved
M7 Number of new social investors who invest in the financial mechanism	2	Mar 2014	2	Mar 2012	Achieved
M8 % of graduated who have a formal job	90	Mar 2014	100	Mar 2012	Achieved

[*] Indicate that the milestone has been reformulated

CRITICAL ISSUES THAT HAVE AFFECTED PERFORMANCE

[None reported in this period]

SECTION 4: RISKS

MOST IMPORTANT RISKS AFFECTING FUTURE PERFORMANCE

	Level	Mitigation action	Responsible
1. The political and macroeconomic situation in Haiti is not altered.	Medium	N/A	Project Guest
2. Favorable labor market conditions facilitate continued high employment rates for higher education graduates.	Low	Maintain contact with employers	Project Guest

PROJECT RISK LEVEL: Low TOTAL NUMBER OF RISKS: 4 IN EFFECT RISKS: 2 NOT IN EFFECT RISKS: 2 MITIGATED RISKS: 0

SECTION 5: SUSTAINABILITY

Likelihood of project sustainability after project completion: P - Probable

CRITICAL ISSUES THAT MAY AFFECT PROJECT SUSTAINABILITY

Issue	Comments
[X] Lack of a sustainability plan or its inadequate implementation	Drafting of sustainability plan prior to project closing is imperative.
Actions related to sustainability which will be or have been implemented:	
To further engage local donors HELP held a donor event on June 6th to thank local supports and future engagement to the mission of HELP. HELP also held a joint press conference with local support, E-Power, to engage the local press and community in the good work that E-Power and HELP are doing together. By engaging our current and potential local supporters, HELP hopes to continue to diversify its donor base. Additionally, local supporters are able to directly benefit from their engagement with HELP by having direct access to HELP students who will be qualified and well-trained interns and employees in the future.	

SECTION 6: PRACTICAL LESSONS

	Relative to Implementation	Author
1. HELP is learning a great deal from the Impact Assessment process. Although FONKOZE has not yet have the finalized report, we have learned about the challenges in collecting relevant data. Maintaining the control group (those that were qualified but were not admitted to HELP) is a vital component of the impact study and yet FONKOZE have reported that this group was difficult to work with. To resolve these issues, HELP is engaged to better communicate the need for these issues and will enter into a contract with the control group to ensure their participation. We will provide a small payment for the participation with the clear understanding that we are only interested in honest answers.		joseph, gabriel
HELP will also clarify the questions of the survey. For example, 50% of the control group reported that they are in school but HELP needs to know of these 50% how many are in university programs or professional schools, etc.		