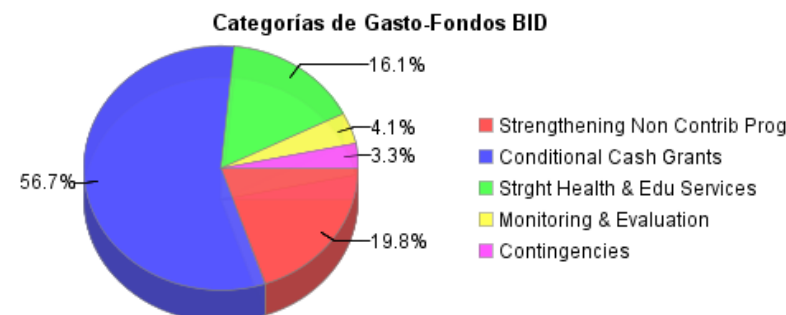
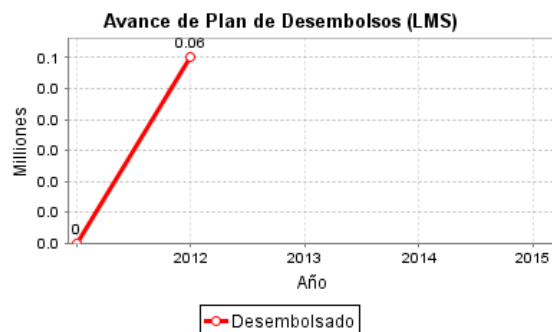
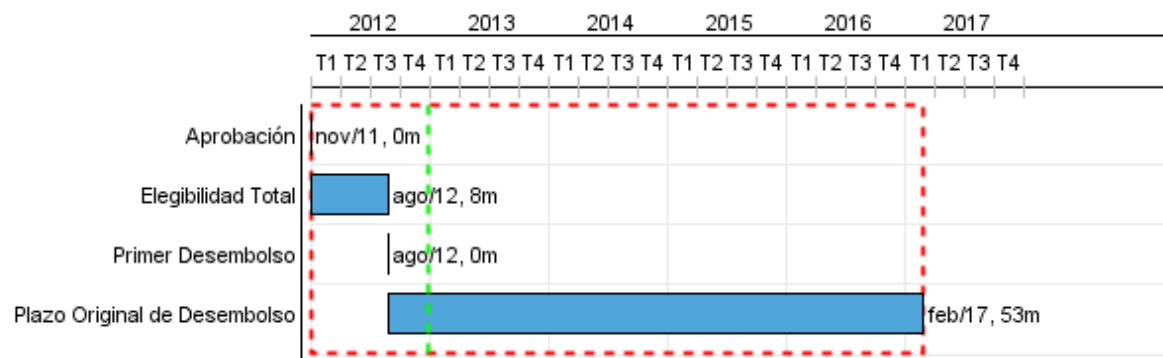


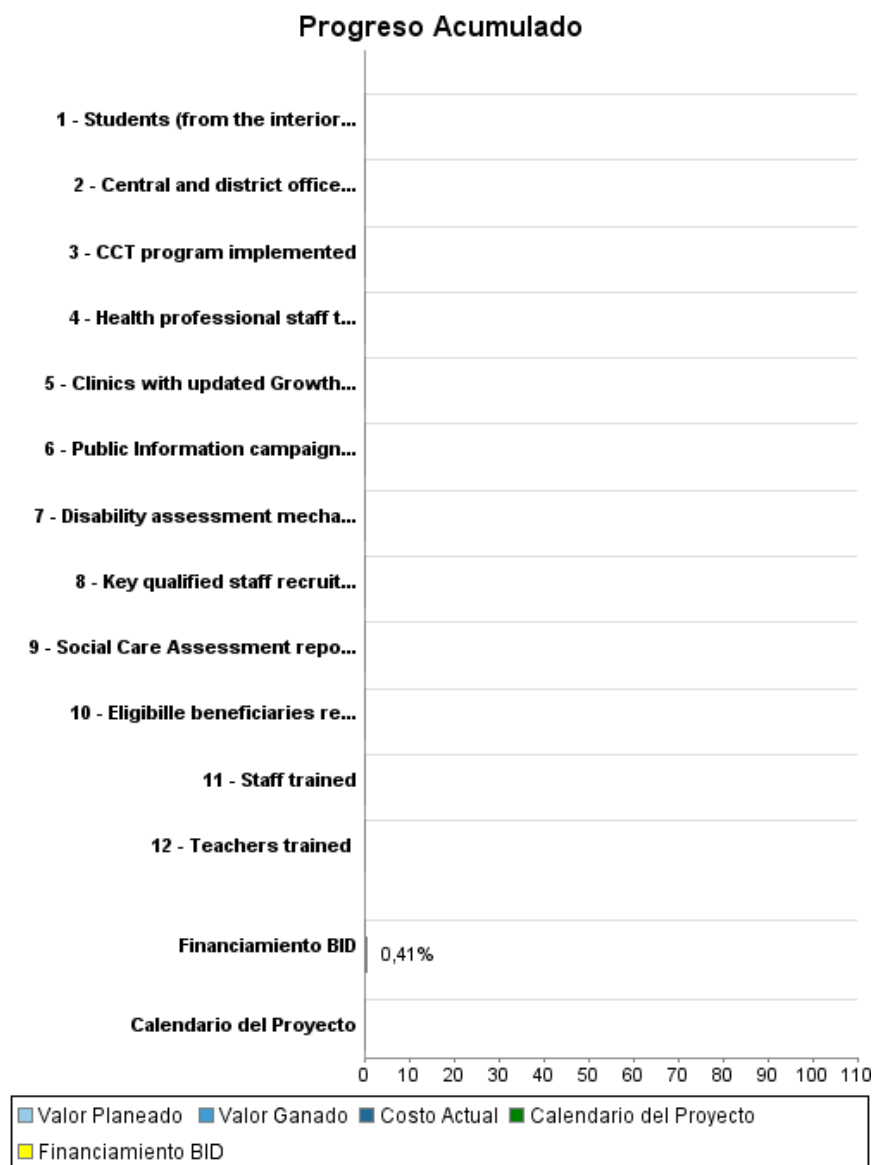
## Informe Resumido

Datos Básicos del Proyecto		Fondos Disponibles (US\$)	Costo total y Fuente
Agencia Ejecutora (AE):	MINISTRY OF SOCIAL AFFAIRS AND HOUSING		
Sector:	SOCIAL INVESTMENT-EARLY CHILDHOOD DEVELOPMENT		
Número(s) de Préstamo:	2650/OC-SU	Monto Aprobado Actual:	15.000.000,00
Etapas:	Approved	Monto Desembolsado a la fecha:	61.100,00
Tipo de Operación:	INV - Inversión	% Desembolsado:	0,41
Operación(es) Relacionada(s):	RG-P1442	Saldo:	14.938.900,00
Subtipo de Operación:	ESP - Inversión Específica		
		BID Original:	15.000.000,00
		Actual BID:	15.000.000,00
		Pari-passu:	100,00
		Co-financiamiento/País:	
		Estimado Original:	15.000.000,00
		Período de Amortización (meses):	174

Categoría de Impacto Ambiental y Social del Proyecto	Reformulación	Validación
Categoría de Impacto Ambiental y Social del Proyecto: Ninguno	( ) ¿El objetivo (s) del proyecto fue reformulado?	Validado por el Jefe de División: 11-dic-2012 Validado por Representante de País: 11-dic-2012



## Progreso Acumulado al 2012



## Resultados

**Resultado:** Non Contributory Social Protection Programs Strengthened

Indicador	Unidad de Medida	Línea de base	Año Línea de base		2012	2013	2014	2015	2016	2017	Fin de Proyecto
Households receiving targeted non-contributory cash transfers that belong to the top 3 quintile of consumption distribution	%			P A							
% of households in the bottom 2 quintiles of consumption distribution receiving targeted non-contributory cash transfers	percentage	17.00	2012	P A							29.00

**Resultado:** Primary school enrolment rate - National

**Resultado:** Primary school enrolment rate - Interior

**Resultado:** Junior secondary school enrolment rate - National

**Resultado:** Junior secondary school enrolment rate - Interior

**Resultado:** Senior secondary school enrolment rate - National

**Resultado:** Senior secondary school enrolment rate - Interior

**Resultado:** Attendance rates in children aged 6-18 in CCT beneficiary households

**Resultado:** Percentage of pregnant women receiving 4 or more prenatal care visits

**Resultado:** Measles immunization coverage (% of children aged 12-23 months receiving measles vaccine before 18 months of age)

**Resultado:** Percentage of pregnant women receiving their first prenatal control before the 14th week of their pregnancy

**Resultado:** Percentage of teachers in the interior trained in teaching Language (Dutch) and Arithmetic utilize new teaching methods

**Resultado:** Decrease in the repetition rate in grades 1 -3 in the Interior

**Resultado:** % of health clinics reaching their agreed upon annual targets for preventive care

**Resultado:** Conditional Cash Grants paid

Indicador	Unidad de Medida	Línea de base	Año Línea de base		2012	2013	2014	2015	2016	2017	Fin de Proyecto
Poverty gap index reduced	percentage	18.00	2011	P						17.00	17.00

## INFORME DE SEGUIMIENTO DE PROGRESO

SU-L1013 - Protección Social del Programa de Apoyo  
2012 1º período con cierre al (30-sep-2012)

Banco Interamericano de Desarrollo - BID

Oficina de Planificación Estratégica y Efectividad en el Desarrollo  
Última Actualización del PMR: 04/10/2012

				A							
National Primary school enrolment rate increased	percentage	90.00	2011	P							95.00
				A							
Primary school rate (for schools in the interior) increased	percentage	71.00	2012	P							80.00
				A							
Junior secondary school (at the national level) enrolment rate increased	percentage	49.00	2011	P							60.00
				A							
Junior secondary school (for schools in the interior) enrolment rate increases	percentage	17.00	2011	P						40.00	40.00
				A							
Senior secondary school (at a national level) enrolment rate increased	percentage	21.00	2011	P						30.00	30.00
				A							
Senior secondary school enrolment (for schools in the interior) rate increased	percentage		2011	P					20.00		20.00
				A							
Attendance rates for children age 6 to 18 (of CTT beneficiary households) increased	percentage		2011	P						80.00	80.00
				A							
Increased attendance rate at clinics by pregnant women on CCT program	percentage	68.00	2011	P						90.00	90.00
				A							
Measles immunization coverage increased for children (ages 12 -23 months) of households receiving CCT grant	percentage	88.00	2011	P						98.00	98.00
				A							
Increased prenatal checks on pregnant women in the CCT program	percentage	17.00	2001	P						30.00	30.00
				A							

**Resultado:** Health and Education Services Strengthened

Indicador	Unidad de Medida	Línea de base	Año Línea de base		2012	2013	2014	2015	2016	2017	Fin de Proyecto
Teachers in the interior trained in Dutch and new teaching methods	percentage		2011	P						80.00	80.00
				A							
Repetition rate for grades 1-3 (for schools in the interior) decreased	percentage	20.00	2011	P						15.00	15.00
				A							
Health clinics achieved targets set out in annual plans	percentage		2011	P			50.00	65.00	75.00	80.00	80.00
				A							

## Productos: Progreso Físico y Financiero Anual 2012

Descripción	Unidad de medida	Físico				Financiero			
		Planeado	Actual	Unidades Acumuladas	Unidades FDP	Planeado	Actual	Costos Acumulados	Costos FDP
<b>Component 1 - Strengthening Non-Contributory Social Protection Programs</b>									
Key qualified staff recruited	staff				107,00				950.000,00
Staff trained	staff				37,00				125.000,00
CCT program implemented	Program				1,00				1.200.000,00
Public Information campaign designed	campaigns				1,00				175.000,00
Central and district offices rehabilitated	offices				6,00				200.000,00
Disability assessment mechanism developed	mechanisms				1,00				50.000,00
Social Care Assessment report completed	Reports				1,00				50.000,00
<b>Component 2 - Conditional Cash Grants</b>									
Eligible beneficiaries received cash transfers	Individuals				148.000,00				8.500.000,00
<b>Strengthening Health and Education Services</b>									
Clinics with updated Growth and Development Tools	clinics				50,00				1.213.920,00
Health professional staff trained	staff				120,00				200.000,00
Teachers trained	Teachers				150,00				300.000,00
Students (from the interior) benefited with school placed due to fee waivers	students				1.300,00				700.000,00
<b>Monitoring and Evaluation</b>									
Impact evaluation, Process Evaluations and Financial Audits	N/A								610.000,00
<b>Contingencies</b>									
contingency budget	N/A								500.000,00
<b>Project Administration</b>									
Administration	N/A					60.000,00			226.080,00
<b>TOTAL</b>						<b>60.000,00</b>			<b>15.000.000,00</b>