

Informe Resumido

Datos Básicos del Proyecto

Agencia Ejecutora (AE): FONDO DE ASISTENCIA ECONOMICA Y SOCIAL
Sector: EDUCATION-PRIMARY EDUCATION
Número(s) de Préstamo: 2153/GR-HA
Etapa: Approved
Tipo de Operación: INV - Inversión
Operación(es) Relacionada(s):
Subtipo de Operación: ESP - Inversión Específica

Fondos Disponibles (US\$)

Monto Aprobado Actual: 20.500.000,00
Monto Desembolsado a la fecha: 20.500.000,00
% Desembolsado: 100,00
Saldo:

Costo total y Fuente

BID Original: 20.500.000,00
Actual BID: 20.500.000,00
Pari-passu: 100,00
Co-financiamiento/País:
Estimado Original: 20.500.000,00
Período de Amortización (meses):

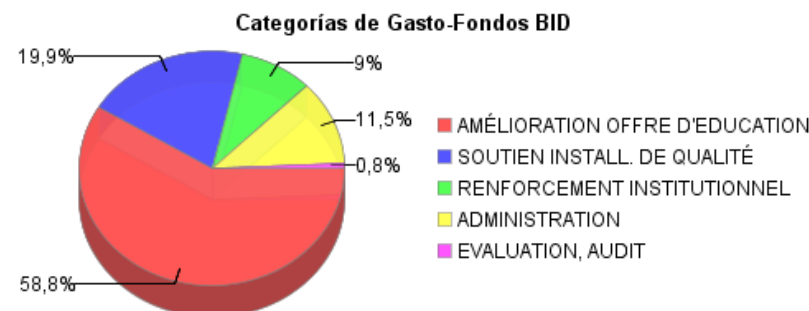
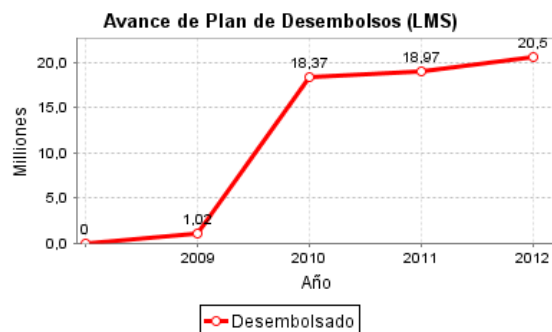
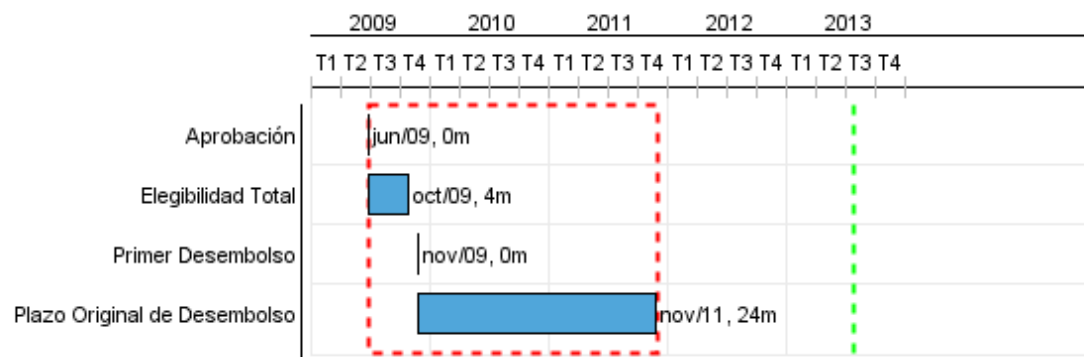
Categoría de Impacto Ambiental y Social del Proyecto

Reformulación

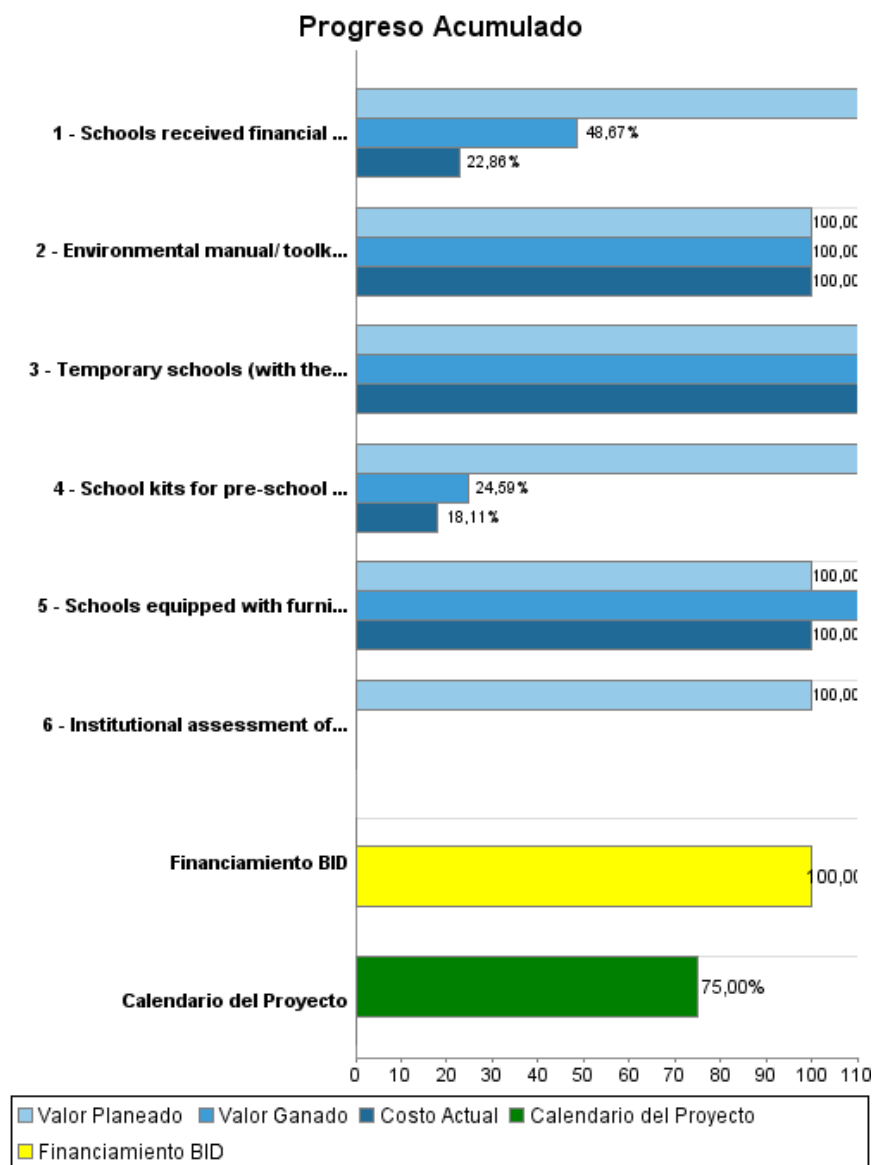
Validación

Categoría de Impacto Ambiental y Social del Proyecto: B () ¿El objetivo (s) del proyecto fue reformulado?

Validado por el Jefe de División: 11-abr-2013
Validado por Representante de País: 12-abr-2013



Progreso Acumulado al 2012



Resultados

| | |
|-----------------------|-----------------------------------|
| Resultado: | Public education supply improved. |
| Supuestos: | Transparent use of resources. |
| Observaciones: | None |

| Indicador | Unidad de Medida | Línea de base | Año Línea de base | | 2012 | Fin de Proyecto |
|--|-----------------------|---------------|-------------------|---|-----------|-----------------|
| Children from schools affected by the earthquake are back to school using secured structures | Students | | 2010 | P | 65.000,00 | 65.000,00 |
| | | | | A | 65.000,00 | |
| Schools damaged by the earthquake that reopened with secured structures. | Percentage of Schools | | 2010 | P | 1,05 | 1,05 |
| | | | | A | 1,05 | |

| | |
|-----------------------|--|
| Resultado: | Quality of school facilities improved. |
| Supuestos: | Transparent use of resources. |
| Observaciones: | None |

| Indicador | Unidad de Medida | Línea de base | Año Línea de base | | 2012 | Fin de Proyecto |
|---|-----------------------|---------------|-------------------|---|------|-----------------|
| Schools damaged by the earthquake fully equipped with quality materials and furniture | Percentage of schools | | 2010 | P | 1,05 | 1,05 |
| | | | | A | 1,05 | |

| | |
|-----------------------|--|
| Resultado: | MENFP's building capacities strengthened |
| Supuestos: | Transparen use of resources |
| Observaciones: | None |

| Indicador | Unidad de Medida | Línea de base | Año Línea de base | | 2012 | Fin de Proyecto |
|--|--------------------------------|---------------|-------------------|---|--------|-----------------|
| New and approved environmental codes for building schools have been considered in the financing of new school constructions. | Percent completion of Document | | 2010 | P | 100,00 | 100,00 |
| | | | | A | 100,00 | |

Productos: Progreso Físico y Financiero Anual 2012

| Descripción | Unidad de medida | Físico | | | | Financiero | | | |
|---|-------------------|----------|-----------|---------------------|--------------|-------------------|--------|-------------------|----------------------|
| | | Planeado | Actual | Unidades Acumuladas | Unidades FDP | Planeado | Actual | Costos Acumulados | Costos FDP |
| Improvement of public education supply | | | | | | | | | |
| Temporary schools (with the capability of double shifts) build and operational in selected sites by the end of the project. | Temporary schools | | | | 50,00 | | | | 8.000.000,00 |
| Support to quality facilities | | | | | | | | | |
| Schools equipped with furniture and school materials by the end of the project. | Schools | | | | 50,00 | | | | 2.617.500,00 |
| School kits for pre-school and secondary education children distributed and in use by the end of the project. | school kits | | 54.774,00 | | 100.000,00 | | | | 3.682.500,00 |
| FAES institutional development | | | | | | | | | |
| Schools received financial support by the end of the project | Schools | | | | 1.909,00 | | | | 3.000.000,00 |
| Environmental manual/ toolkit to guide future school construction developed and approved. | Manual | | | | 1,00 | | | | 290.018,00 |
| Institutional assessment of FAES | organization | 1,00 | | | 1,00 | 140.000,00 | | | 140.000,00 |
| Administration | | | | | | | | | |
| Administration Costs | N/A | | | | | | | | 3.437.300,00 |
| Evaluation | | | | | | | | | |
| Project Evaluation | N/A | | | | | | | | 300.000,00 |
| Contingency | | | | | | | | | |
| Project Contingency | N/A | | | | | | | | 436.442,00 |
| TOTAL | | | | | | 140.000,00 | | | 21.903.760,00 |