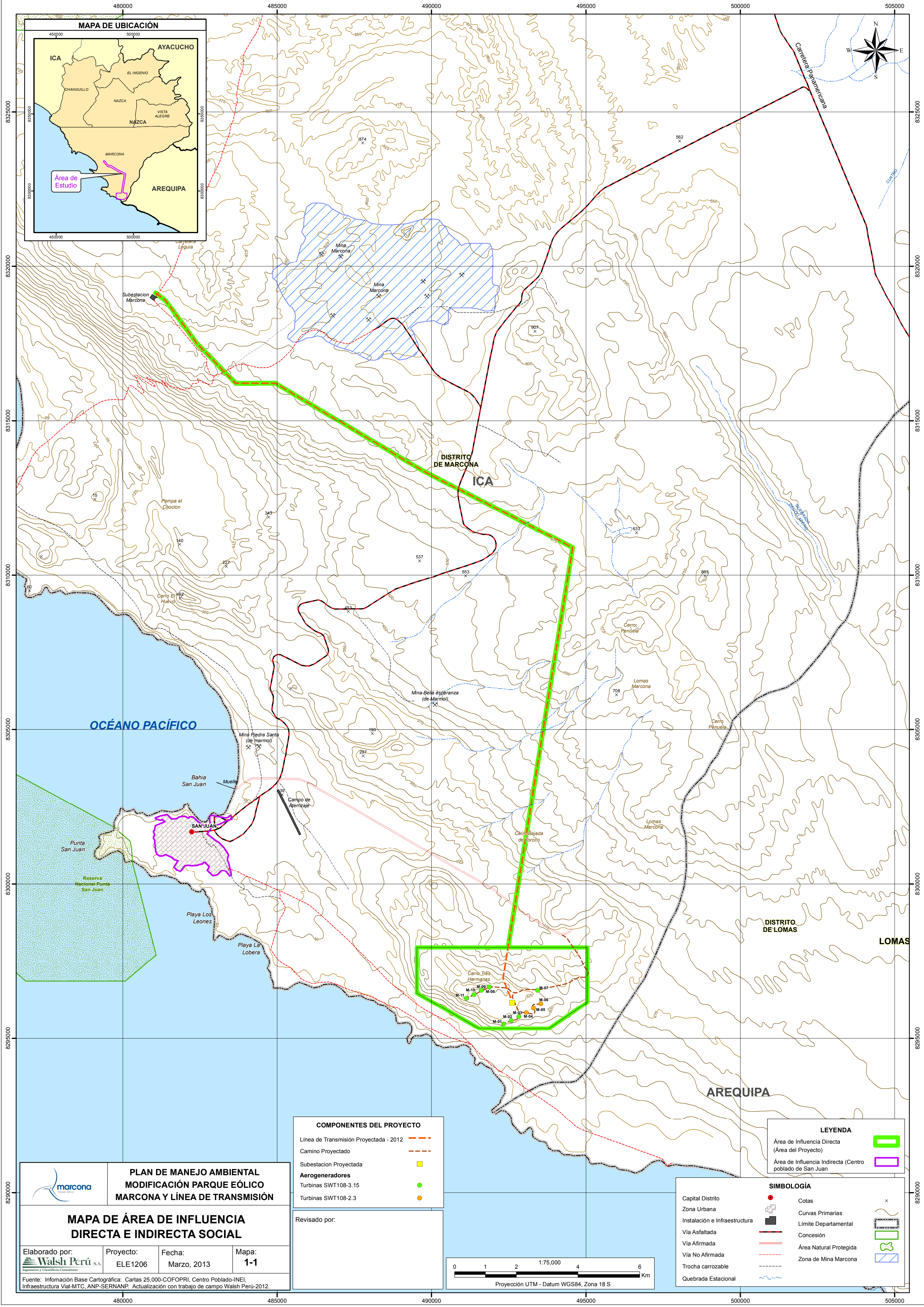
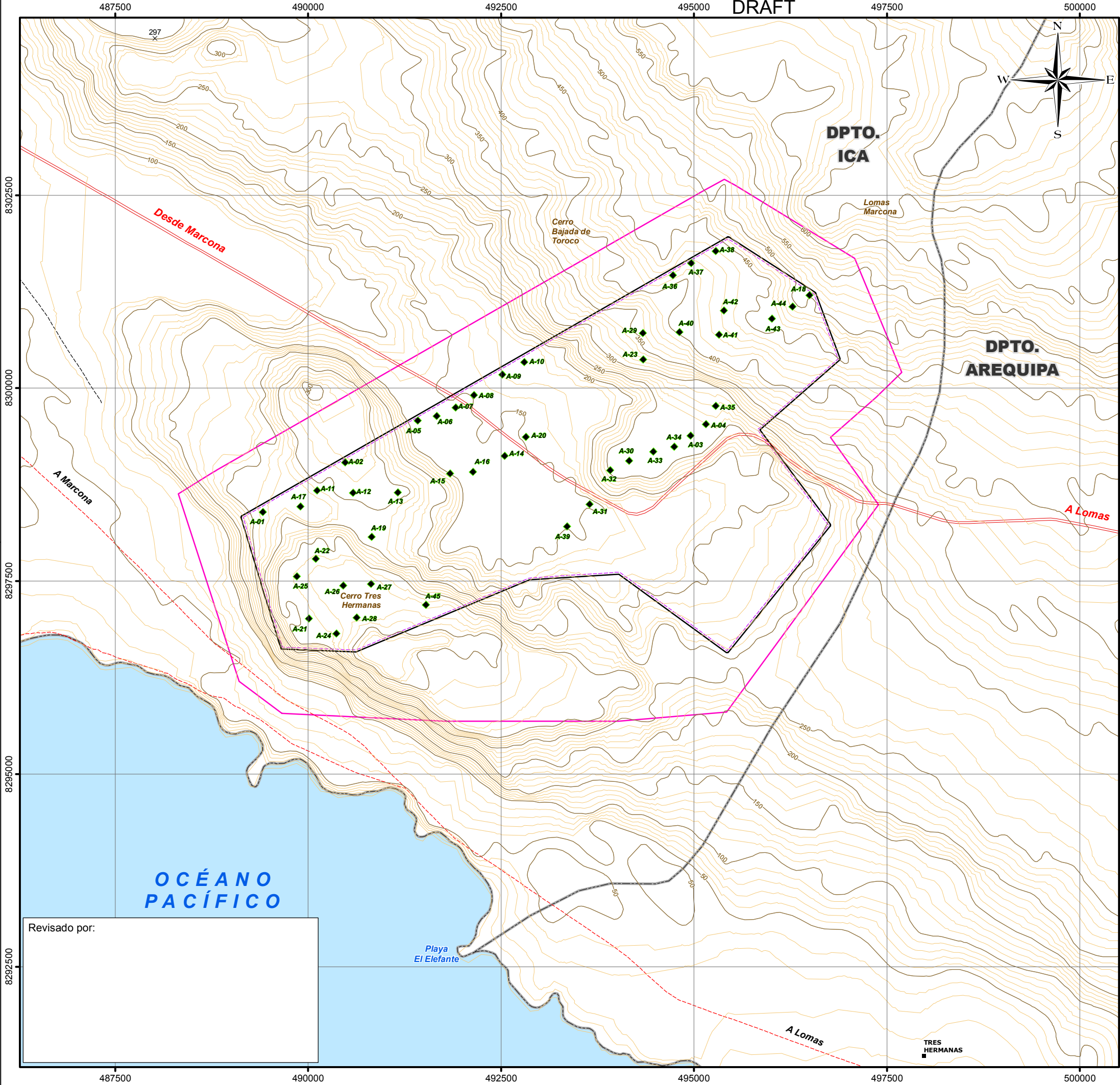


DRAFT

FIGURES





SIMBOLOGÍA	
Curva Principal	
Curva Secundaria	
Vía Afirmada	
Vía No Afirmada	
Trocha carrozable	
Límite Departamental	
Área de Influencia Directa	
Área de Influencia Indirecta	

COMPONENTES DEL PROYECTO	
Aerogeneradores	
Área de Concesión	

UBICACIÓN DE AEROGENERADORES		
Código	Coordenadas UTM	
	Este	Norte
A-01	489417	8298399
A-02	490482	8299040
A-03	494958	8299391
A-04	495158	8299538
A-05	491421	8299586
A-06	491669	8299642
A-07	491912	8299754
A-08	492152	8299913
A-09	492520	8300179
A-10	492804	8300342
A-11	490117	8298680
A-12	490584	8298650
A-13	491162	8298652
A-14	492546	8299128
A-15	491841	8298900
A-16	492139	8298918
A-17	489900	8298470
A-18	496498	8301211
A-19	490826	8298078
A-20	492822	8299371
A-21	490014	8297017
A-22	490102	8297792
A-23	494345	8300375
A-24	490366	8296825
A-25	489857	8297563
A-26	490455	8297447
A-27	490815	8297468
A-28	490629	8297031
A-29	494340	8300717
A-30	494160	8299065
A-31	493647	8298502
A-32	493916	8298940
A-33	494476	8299181
A-34	494746	8299247
A-35	495282	8299774
A-36	494727	8301469
A-37	494965	8301624
A-38	495281	8301781
A-39	493358	8298214
A-40	494812	8300731
A-41	495325	8300697
A-42	495389	8301011
A-43	496011	8300906
A-44	496280	8301063
A-45	491529	8297197

ESTUDIO DE IMPACTO AMBIENTAL
PARQUE EÓLICO TRES HERMANAS

TÍTULO :

MAPA DE COMPONENTES
DEL PROYECTO

DEPARTAMENTO: ICA		PROVINCIA: NAZCA	DISTRITO: MARCONA
PROYECCIÓN Y DATUM: Datum: WGS 1984 UTM - Zona 18 Sur Proyección: Transverso Mercator Falso Este: 500000.000000 Meridiano Central: -75.00 Falso Norte: 1000000.000000 Latitud de Origen: 0.00		Escala: 1:50,000 0 0.25 0.5 1 1.5 km	CLIENTE: PARQUE EOLICO TRES HERMANAS S.A.C.
ELABORADO POR: Walsh Perú S.A. Ingenieros y Científicos Consultores		PROYECTO: ELE1189	FECHA: Julio 2012
FUENTE: INEI (Instituto Nacional de Estadística e Informática) IGN (Instituto Nacional Geográfico), COFOPRI (Comisión de Formalización de la Propiedad Informal)		PLANO: 1-2	

DRAFT

APPENDIX A
SUMMARY OF ACTIONS REQUIRED TO COMPLY
WITH EQUATOR PRINCIPLES AND IFC

Summary of Actions Required to Comply with Equator Principles and IFC Performance Standards

Item No.	Actions Required	Responsible Entity	Timeline to Complete Action
1.	Establish a Social and Environmental Management System	Cobra	1-3 months
2.	Develop an Air Quality Management Plan (with particular emphasis on dust)	Cobra	1-3 months
3.	Develop a Grievance Procedure	Cobra	1-3 months
4.	Develop a Noise Management Plan	Cobra	3-6 months
5.	Develop a Petroleum, Fuels and Hazardous Material Management Plan	Cobra	3-6 months
6.	Develop a Traffic Management Plan	Cobra	1-3 months
7.	Develop a Waste Management Plan	Cobra	3-6 months
8.	Develop a Community Health, Safety and Security Management Plan	Cobra	1-3 months
9.	Develop a Worker Health and Safety Management Plan	Cobra	1-3 months
10.	Emergency Preparedness and Response Plan	Cobra	3-6 months
11.	Develop a Stakeholder Engagement Plan	Cobra	1-3 months
12.	Develop a Human Resources Policy	Cobra	1-3 months
13.	Develop a Closures Plan	Cobra	12 months -36 months
14.	Develop a Construction Phase Contractor Management Plan	Cobra	1-3 months
15.	Develop a Monitoring and Reporting Plan	Cobra	3-6 months
16.	Develop a Written Commitment by Cobra to comply with IFC Requirements	Cobra	1-3 months

DRAFT

**APPENDIX B
PHOTOGRAPHS**

**Appendix B – Site Photographs: Parque Eólico Marcona and Parque Eólico Tres Hermanas Projects****PHOTO 1****PHOTO 2**



PHOTO 3





PHOTO 4



DRAFT

**APPENDIX C
DOCUMENTATION**

DRAFT

At Golder Associates we strive to be the most respected global group of companies specializing in ground engineering and environmental services. Employee owned since our formation in 1960, we have created a unique culture with pride in ownership, resulting in long-term organizational stability. Golder professionals take the time to build an understanding of client needs and of the specific environments in which they operate. We continue to expand our technical capabilities and have experienced steady growth with employees now operating from offices located throughout Africa, Asia, Australasia, Europe, North America and South America.

Africa	+ 27 11 254 4800
Asia	+ 852 2562 3658
Australasia	+ 61 3 8862 3500
Europe	+ 356 21 42 30 20
North America	+ 1 800 275 3281
South America	+ 55 21 3095 9500

solutions@golder.com
www.golder.com

Golder Associates Inc.
6026 NW 1st Place
Gainesville, FL 32607 USA
Tel: (352) 336-5600
Fax: (352) 336-6603

